



AquaCulture Solutions

Pumps, UV, IoT, and service solutions
for the entire value chain

AquaCulture

DESMI
Make life flow

Feeding tomorrow's opportunities

We help you produce aquaculture products efficiently, reliably, and with minimal impact on our climate and environment with a full range of solutions – from pumps and supporting systems to UV disinfection.

We pioneer the development of critical flow processes for vessel and land-based fish farming, helping you take advantage of market opportunities, contribute to food security, and support economic development.

We have worked with the aquaculture industry for decades and can develop a solution that fits your requirements to the letter. Get an overview in this brochure and contact us to learn more.

GO GREEN

Stay clean, pump & UV Supreme

- ✓ High efficiency
- ✓ High standards of cleanliness and hygiene
- ✓ Uninterrupted production

– are critical success factors across the aquaculture value chain, and DESMI solutions help you address all of them



Standard Horizontal Installation



For pumping
the water
downwards

Horizontal Reverse Installation



Vertical Installation



AquaShield UV System

The NVI approved AquaCulture UV system from DESMI is designed to address these challenges by delivering extremely high and documented UV doses for unrivaled safety

Proven Technology

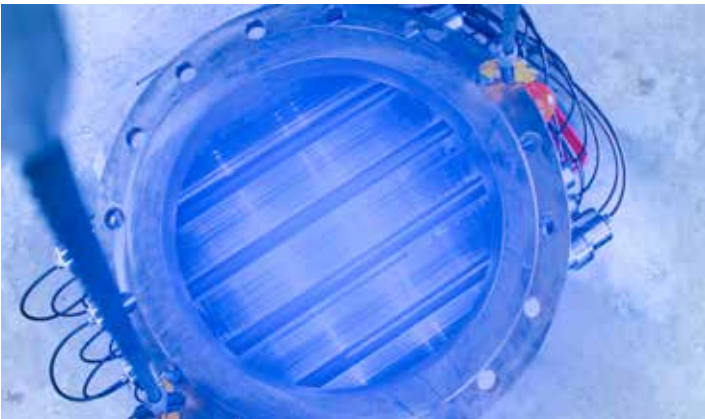
Key Benefits of DESMI AquaCulture Solutions

Our Offerings for the AquaCulture Industry



Pumps

FROM SHIPS TO FACTORIES our robust and energy-efficient pumps are ideal for applications including water intake, filtration, and cooling/heating. Our High Flow Low Pressure pumps, for example, are designed specifically to deliver flexible and efficient performance in aquaculture applications, providing high efficiency for high flows at low head – and you can install them horizontally, vertically, or horizontally with the discharge facing down.



UV Treatment

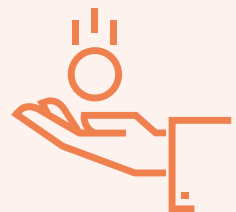
DESMI UV TREATMENT systems help you treat intake and effluent water with zero chemical usage, protecting fish stocks from disease and pollution. Our AquaShield and AquaDose systems offer superior treatment performance thanks to their unique shape and lamp configuration. They cover everything from very low to very high flow rates, and they are available as standalone components or as complete plug-and-play solutions.



Increased uptime with reliable and durable equipment



Maximised productivity and turnover because of increased uptime and good fish health



Financial savings from reduced energy consumption and lower maintenance cost



IOT Solutions

OUR IOT PLATFORM for online monitoring of aquaculture pumps, allows you to track assets in remote locations, no matter where you are. The system records live data on temperature, pressure, and vibrations, analyses the data, and alerts you in case of any anomalies. This helps you ensure that your critical pumps are running well round the clock, and greatly simplifies maintenance and service planning.



Service

SERVICE, OUR DEDICATED SERVICE BRANCH, fulfils all your service requirements, from installation and commissioning to service and parts, round the clock and round the globe. With our DESMI 48 concept, you can get a selection of replacement pumps within two working days, and we carry out repairs on many different pump brands. Our mission is simple: to make it easier to own a DESMI product.



Improved control and overview with remote monitoring options



Reduced carbon footprint from energy-efficient solutions



Discover our complete pump range at **desmi.com**

Optimising Production at Sea and on Land



Fish Farms

From hatcheries to grow-out systems, from offshore pens to land-based RAS or flow-through systems, from Atlantic salmon to other farmable species, our pumps and UV systems help you ensure stable production and healthy stocks.



Well Boats and other Vessels

In any weather conditions, your well boats and other aquaculture vessels need to operate safely and economically. Our pumps handle everything from cooling water to water treatment, keeping your business running even in challenging conditions.



Factories

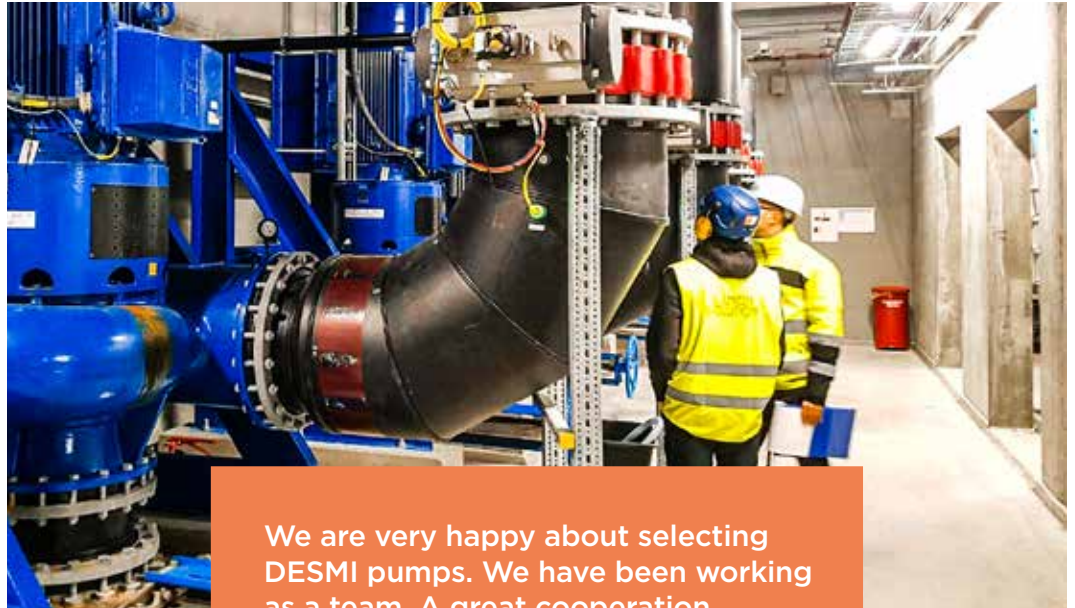
Our range of industry pumps help you process harvested fish into fillets, and into oil, meal, and feed pellets. They handle any liquid at any temperature and are available in many different materials including food-grade stainless steel.



Custom engineering

Our engineering department has a strong track record in turning products into solutions. With professional end-users, one size only rarely fits all, and we work with you to develop a solution based on your exact pain points and requirements.

Ensuring Fish Health for Salmon Evolution



We are very happy about selecting DESMI pumps. We have been working as a team. A great cooperation.

Hallgeir Øyen
Technical Manager, Salmon Evolution, Norway



When Salmon Evolution were planning a new land-based HOG salmon plant, they knew they needed pumps that would last for many years, ensuring a safe and healthy environment for the fish.

The Norwegian company selected DESMI based on our reliable, high-quality, and energy-efficient pumps and competitive pricing, and our proven excellent service and aftermarket support. Technical Manager Hallgeir Øyen praised the combination of reliable products and great support.

“The DESMI team was professional and supportive, providing efficient and effective solutions for the customer’s needs,” he said.



Location

Indre Harøy, Norway



Application

Land-based plant for HOG salmon



DESMI products

110 centrifugal pumps plus service and aftermarket support

Optimal Environment at Sashimi Royal



We have obtained pumps capable of handling the capacities we expect and a skilled partner we hope to work with for many years.

Mikkel K. Thomsen
CEO, Nordic Aquafarms Technology ApS, Denmark



SASHIMI ROYAL
SUSTAINABLE AQUACULTURE

In a 24-tank production hall, Sashimi Royal cultivate yellowtail kingfish in ideal aquaculture conditions in Hanstholm, Denmark. DESMI pumps are playing a key role in ensuring a perfect environment for the fish.

The pumps include NSLH centrifugal pumps with a back pull-out design which enables easy maintenance without needing to alter or remove pipes or couplings. CEO Mikkel K. Thomsen of Nordic Aquafarms who designed and built the facility is happy with the solution, and with DESMI's contributions.

“DESMI has always shown great openness and willingness to provide the right and best pumps,” he said.



Location

Hanstholm, Denmark



Application

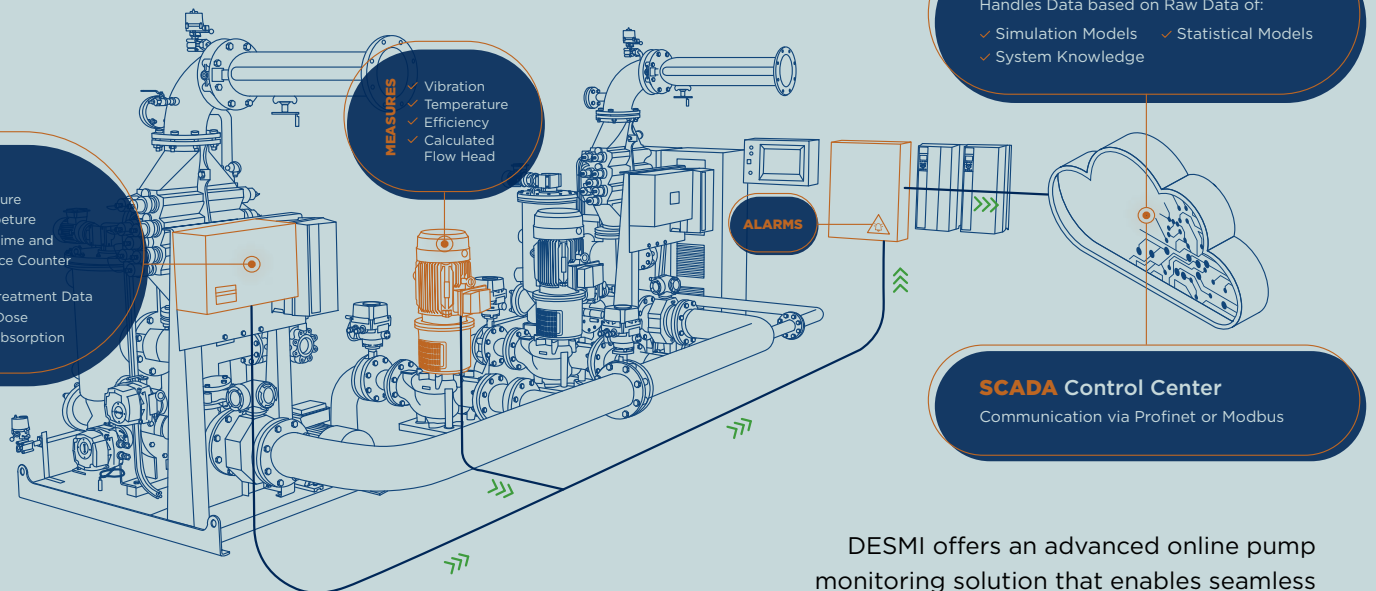
Land-based plant for yellowtail kingfish



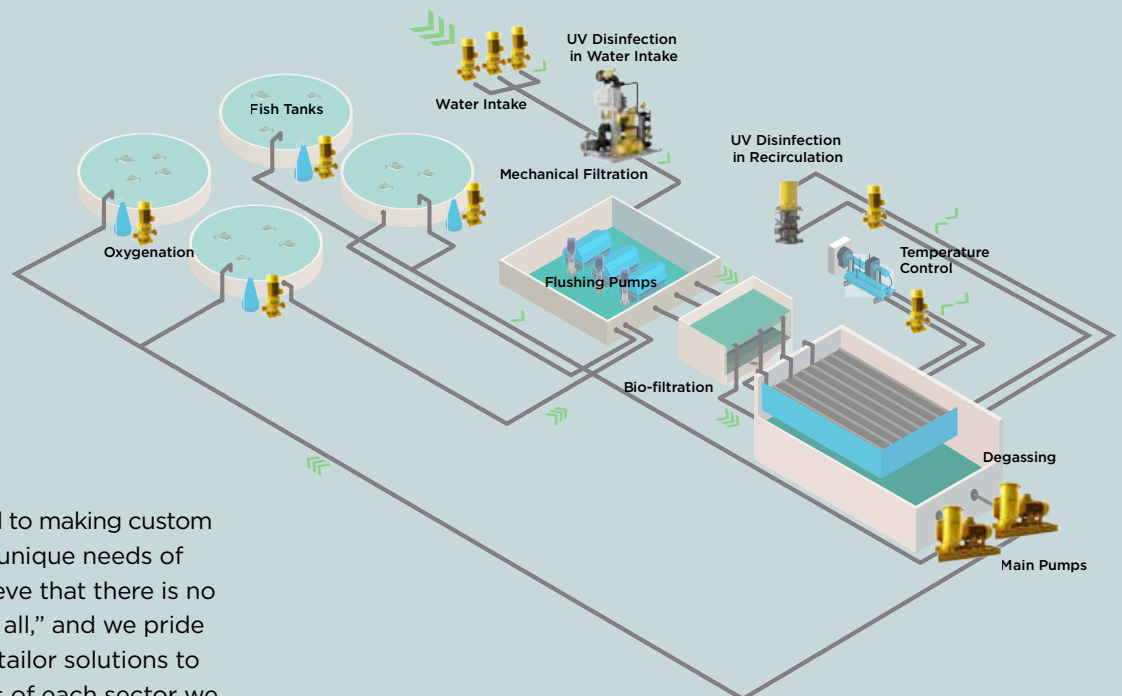
DESMI products

30+ pumps including NSLH models with back pull-out design

Monitoring Flow Data



DESMI offers an advanced online pump monitoring solution that enables seamless surveillance of crucial sensor-based pump parameters. This includes monitoring pump pressure at both the inlet and discharge flanges, flow rate, vibration levels, media temperature, motor temperature, and various other critical metrics.



At DESMI, we are committed to making custom solutions that cater to the unique needs of various industries. We believe that there is no such thing as “one size fits all,” and we pride ourselves on our ability to tailor solutions to meet the specific demands of each sector we serve. Our approach is rooted in a long history of engineering excellence and a relentless pursuit of customer satisfaction.

Above: A simplified RAS showing where DESMI pumps and solutions can be used

Call the
DESMI Service Hotline
round the clock
at +45 96 32 81 10

After-sales and service

from DESMI Service



Call us anytime and let us know what you need: Our global after-sales and service department DESMI Service offers parts and services that keep your aquaculture operation running.

Our spare part kits cover several pumps and contain the parts you need for overhauls, for example shaft seals, bearings, and O-rings. You can also order individual spare parts as needed, and for some parts or products, we ship within 48 hours.

Our highly experienced and factory trained service teams provide a long list of onsite services, from installation and commissioning to service, repair, upgrades, and maintenance, plus training and technical support – whatever it takes to optimize your critical flow processes.



Overhaul
Videos



We exist to keep your business flowing

DESMI works closely with aquaculture engineers, designers, and owners to keep critical production processes flowing reliably and efficiently on fish farms on land and at sea, anywhere on the planet. Our pumps, UV treatment systems, IoT offerings, and after-sales service are trusted worldwide for dependability and the lowest total cost of ownership.

At DESMI, our focus has never been on discovering what we can do – it's about pushing the boundaries of what we can do for you, no matter which type of facility and what species you work with. We help you ensure optimal production environments that keep fish stocks healthy and safe and keep your business profitable.

Founded in Denmark in 1834, we have provided the expertise, solutions, and aftermarket support our customers need for nearly two centuries. We help you operate more efficiently and reliably, enabling your ambitions for performance, food safety, and growth whilst helping you reduce your climate impact.

Together, we can make a difference, whatever the future holds. Because we, like you, are here to **make life flow**.

For more information, visit desmi.com

DESMI A/S

Tagholm 1
DK-9400 Nørresundby
Tel.: +45 96 32 81 11