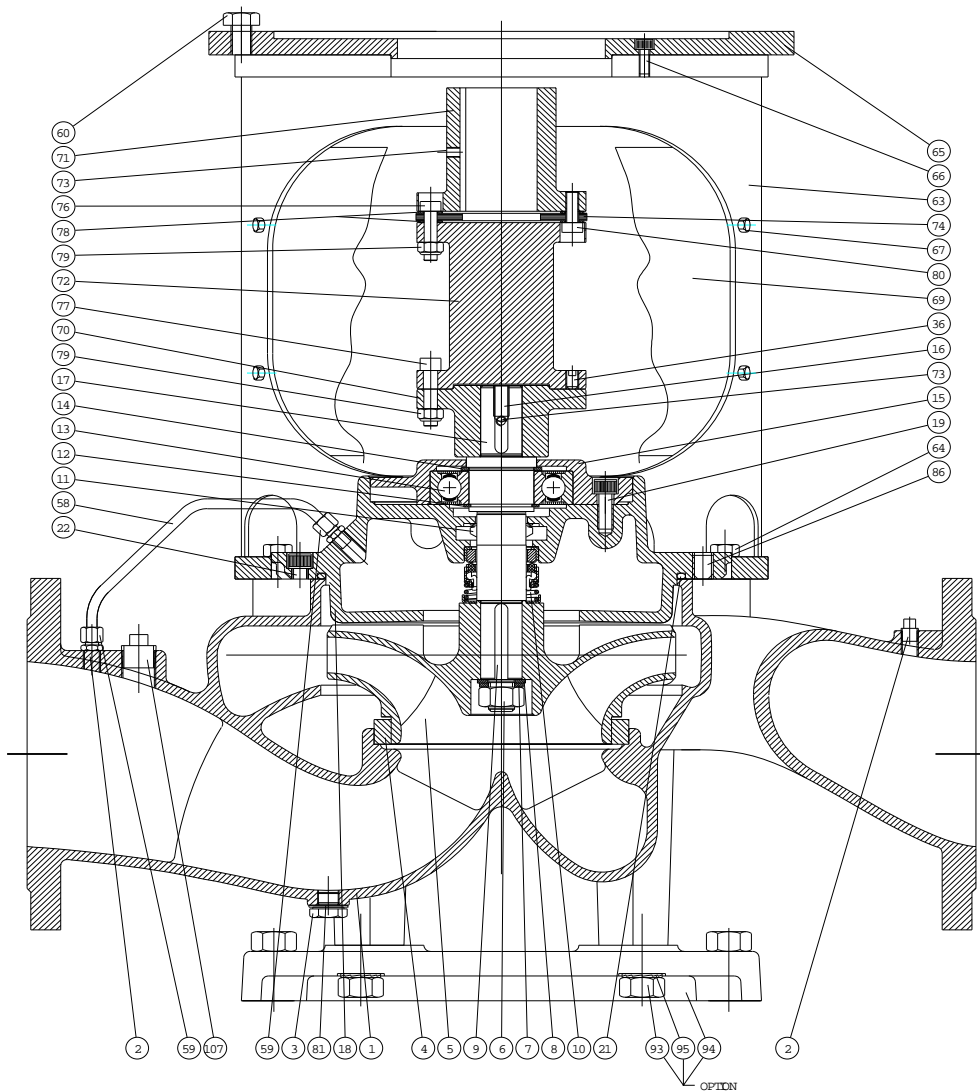
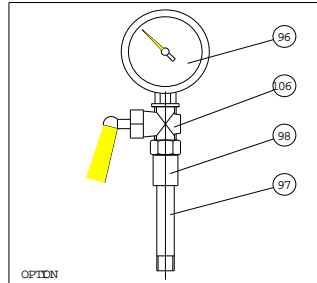


15. ASSEMBLY DRAWING ø215/265

See ø330/415 pump on the next pages

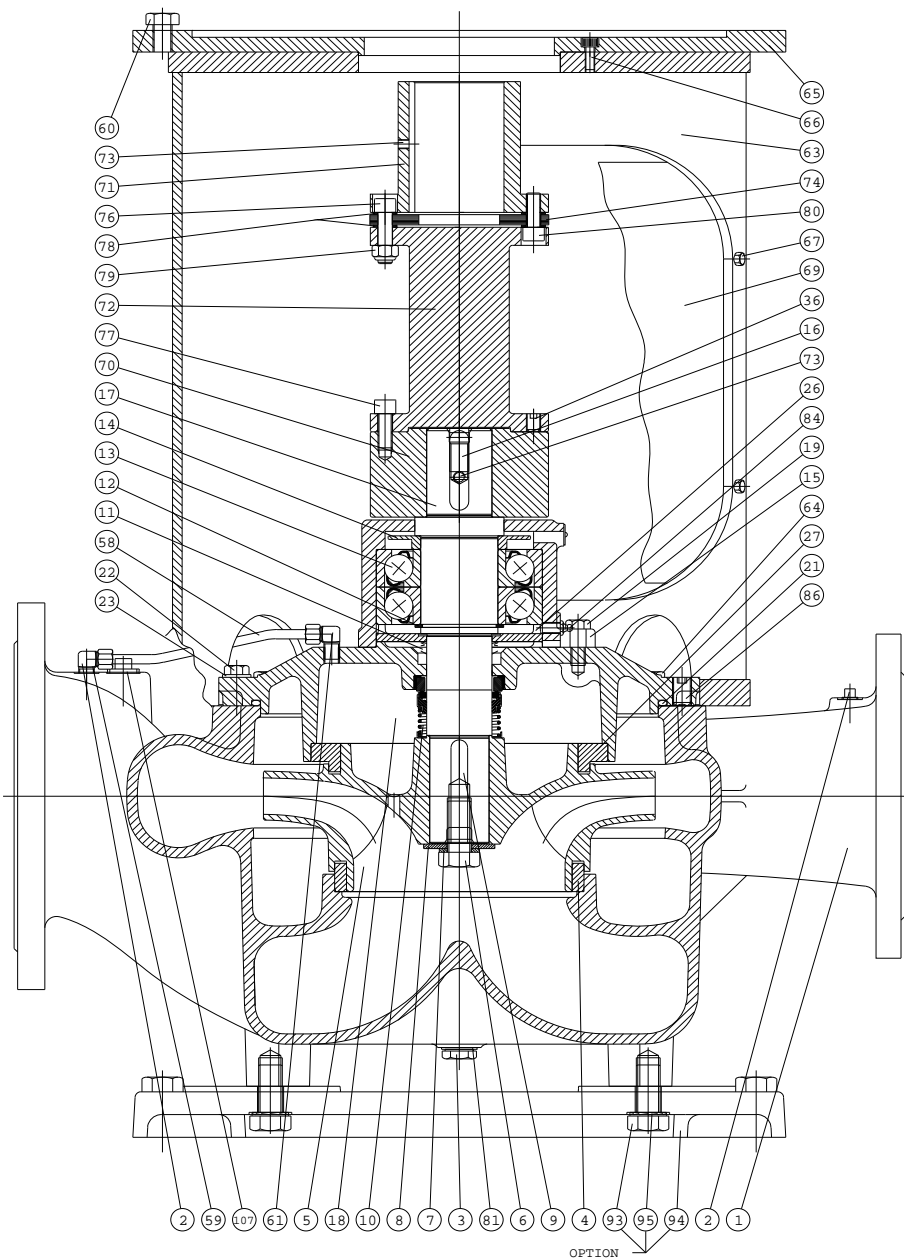
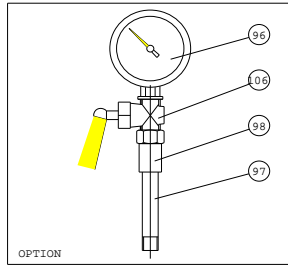
16. SPARE PARTS LIST ø215/265



- 1 Pump casing
 - 2 Pipe plug
 - 3 Pipe plug
 - 4 Sealing ring
 - 5 Impeller
 - 6 Nut
 - 7 Spring collar
 - 8 Washer
 - 9 Sunk key
 - 10 Shaft seal
 - 11 Water deflector
 - 12 Ring lock
 - 13 Ball bearing
 - 14 Support disc
 - 15 Bearing cover
 - 16 Sunk key
 - 17 Shaft
 - 18 Shaft seal cover
 - 19 Allen screw
 - 21 O-ring
 - 22 Allen screw
 - 36 Pointed screw
 - 58 Copper pipe
 - 59 Hexagon nipple
 - 60 Set screw
 - 63 Motor bracket
 - 64 Set screw
 - 65 Intermediate flange *)
 - 66 Allen screw *)
 - 67 Set screw
 - 69 Guard
 - 70 Coupling part pump
 - 71 Coupling part motor
 - 72 Spacer
 - 73 Pointed screw
 - 74 Coupling discs
 - 76 Allen screw
 - 77 Allen screw
 - 78 Washer
 - 79 Pinch nut
 - 80 Allen screw
 - 81 Sealing washer
 - 86 Pointed screw
 - 93 Set screw
 - 94 Base plate
 - 95 Lock washer
 - 96 Pressure gauge
 - 97 Nipple
 - 98 Sleeve
 - 106 Pressure gauge cock
 - 107 Pipe plug
- *) Only if motor is bigger than motor bracket

19. ASSEMBLY DRAWING ø330/415 with heavy bearing housing

20. SPARE PARTS LIST ø330/415 with heavy bearing housing



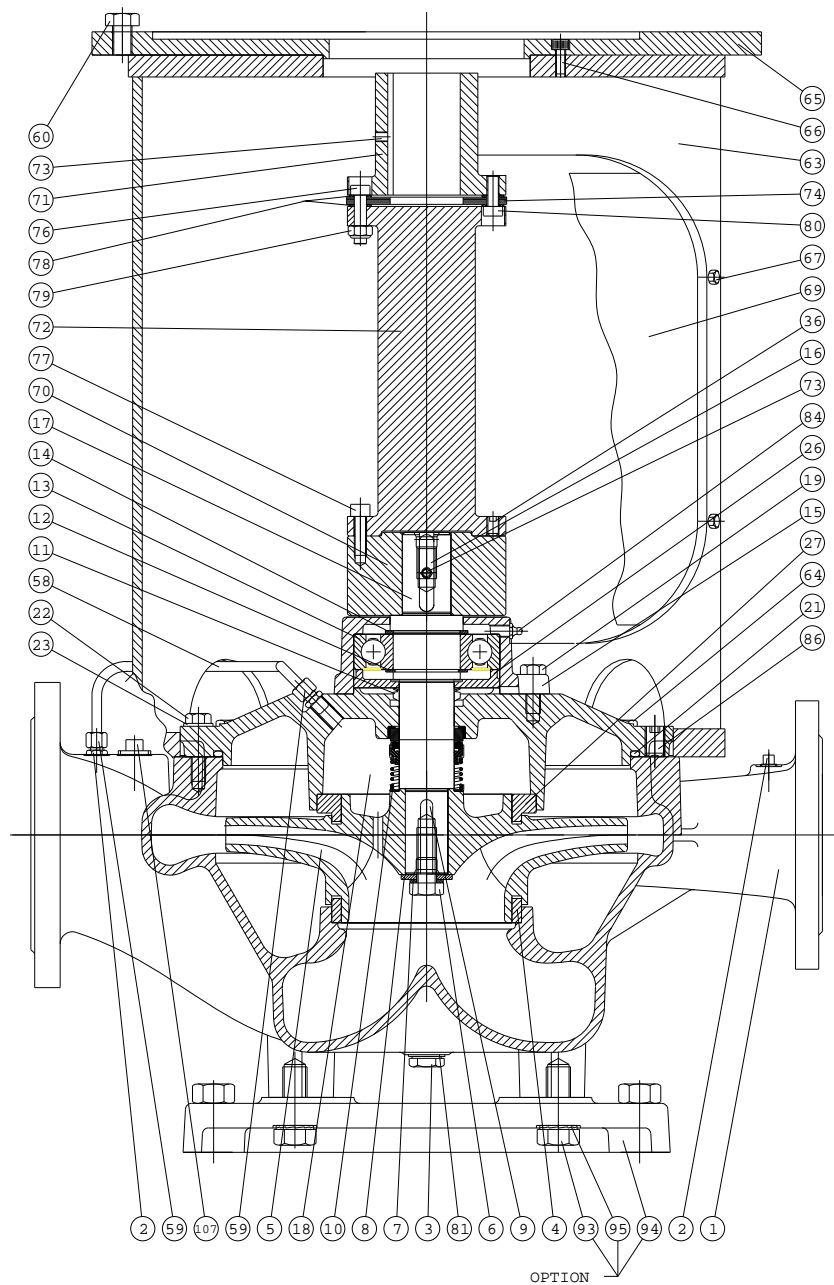
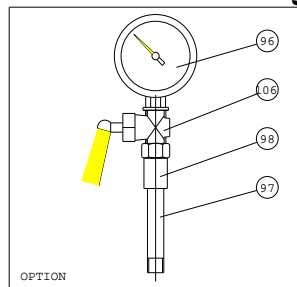
- 1 Pump casing
- 2 Pipe plug
- 3 Pipe plug
- 4 Sealing ring
- 5 Impeller
- 6 Nut
- 7 Spring collar
- 8 Washer
- 9 Sunk key
- 10 Shaft seal
- 11 Water deflector
- 12 Ring lock
- 13 Ball bearing
- 14 Grease valve ring
- 15 Bearing cover
- 16 Sunk key
- 17 Shaft
- 18 Shaft seal cover
- 19 Allen screw
- 21 O-ring
- 22 Allen screw
- 27 Sealing ring 2
- 36 Pointed screw
- 58 Copper pipe
- 59 Hexagon nipple
- 60 Set screw
- 61 Hexagon nipple
- 63 Motor bracket
- 64 Set screw
- 65 Intermediate flange*)
- 66 Allen screw*)
- 67 Set screw
- 69 Guard
- 70 Coupling part pump
- 71 Coupling part motor
- 72 Spacer
- 73 Pointed screw
- 74 Coupling discs
- 76 Allen screw
- 77 Allen screw
- 78 Washer
- 79 Pinch nut
- 80 Allen screw
- 81 Sealing washer
- 86 Pointed screw
- 93 Set screw
- 94 Base plate
- 95 Lock washer
- 96 Pressure gauge
- 97 Nipple
- 98 Sleeve
- 106 Pressure gauge cock
- 107 Pipe plug

*) Only if motor is bigger than motor bracket

17. ASSEMBLY DRAWING ø330/415 with light bearing housing

(80-330, 100-330, 125-330, 100-415 and 125-415)

18. SPARE PARTS LIST ø330/415 with light bearing housing



- | | |
|-----|-----------------------|
| 1 | Pump casing |
| 2 | Pipe plug |
| 3 | Pipe plug |
| 4 | Sealing ring |
| 5 | Impeller |
| 6 | Nut |
| 7 | Spring collar |
| 8 | Washer |
| 9 | Sunk key |
| 10 | Shaft seal |
| 11 | Water deflector |
| 12 | Ring lock |
| 13 | Ball bearing |
| 14 | Support disc |
| 15 | Bearing cover |
| 16 | Sunk key |
| 17 | Shaft |
| 18 | Shaft seal cover |
| 19 | Allen screw |
| 21 | O-ring |
| 22 | Allen screw |
| 27 | Sealing ring 2 |
| 36 | Pointed screw |
| 58 | Copper pipe |
| 59 | Hexagon nipple |
| 60 | Set screw |
| 63 | Motor bracket |
| 64 | Set screw |
| 65 | Intermediate flange*) |
| 66 | Allen screw*) |
| 67 | Set screw |
| 69 | Guard |
| 70 | Coupling part pump |
| 71 | Coupling part motor |
| 72 | Spacer |
| 73 | Pointed screw |
| 74 | Coupling discs |
| 76 | Allen screw |
| 77 | Allen screw |
| 78 | Washer |
| 79 | Pinch nut |
| 80 | Allen screw |
| 81 | Sealing washer |
| 86 | Pointed screw |
| 93 | Set screw |
| 94 | Base plate |
| 95 | Lock washer |
| 96 | Pressure gauge |
| 97 | Nipple |
| 98 | Sleeve |
| 106 | Pressure gauge cock |
| 107 | Pipe plug |

*) Only if motor is bigger than motor bracket